



GPR172B Polyclonal Antibody

Catalog No	YP-Ab-13318
Isotype	IgG
Reactivity	Human;Rat;Mouse;
Applications	WB;IF;ELISA
Gene Name	SLC52A1
Protein Name	Solute carrier family 52 riboflavin transporter member 1
Immunogen	The antiserum was produced against synthesized peptide derived from human PEVR2. AA range:235-284
Specificity	GPR172B Polyclonal Antibody detects endogenous levels of GPR172B protein.
Formulation	Liquid in PBS containing 50% glycerol, 0.5% BSA and 0.02% sodium azide.
Source	Polyclonal, Rabbit,IgG
Purification	The antibody was affinity-purified from rabbit antiserum by affinity-chromatography using epitope-specific immunogen.
Dilution	Western Blot: 1/500 - 1/2000. Immunofluorescence: 1/200 - 1/1000. ELISA: 1/10000. Not yet tested in other applications.
Concentration	1 mg/ml
Purity	≥90%
Storage Stability	-20°C/1 year
Synonyms	SLC52A1; GPR172B; PAR2; RFT1; Solute carrier family 52; riboflavin transporter, member 1; Porcine endogenous retrovirus A receptor 2; PERV-A receptor 2; Protein GPR172B; Riboflavin transporter 1; hRFT1
Observed Band	46kD
Cell Pathway	Cell membrane ; Multi-pass membrane protein .
Tissue Specificity	Widely expressed. Highly expressed in the testis, placenta and small intestine. Expressed at lower level in other tissues.
Function	function:Acts as receptor for porcine endogenous retrovirus subgroup A (PERV-A),similarity:Belongs to the PERVR family.,tissue specificity:Detected in a wide variety of tissues. High expression in testis.,
Background	Biological redox reactions require electron donors and acceptor. Vitamin B2 is the source for the flavin in flavin adenine dinucleotide (FAD) and flavin mononucleotide (FMN) which are common redox reagents. This gene encodes a member of the riboflavin (vitamin B2) transporter family. Haploinsufficiency of this protein can cause maternal riboflavin deficiency. Multiple alternatively spliced variants, encoding the same protein, have been identified. [provided by RefSeq, Jan 2013],

**matters needing attention**

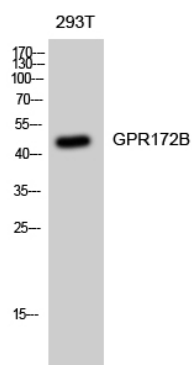
Avoid repeated freezing and thawing!

Usage suggestions

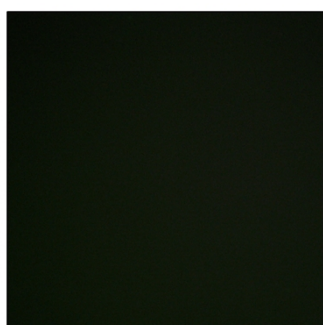
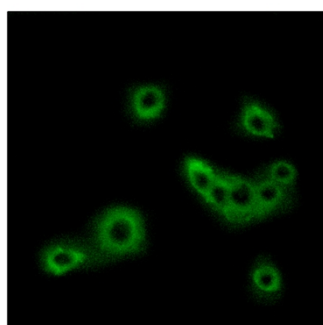
This product can be used in immunological reaction related experiments. For more information, please consult technical personnel.



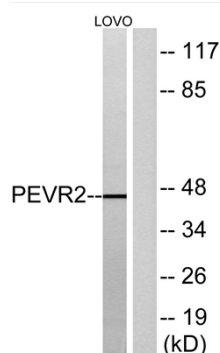
Products Images



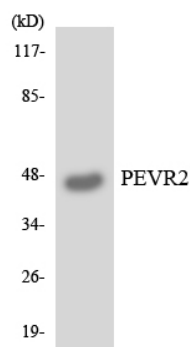
Western Blot analysis of 293T cells using GPR172B Polyclonal Antibody diluted at 1:1000



Immunofluorescence analysis of MCF7 cells, using PEVR2 Antibody. The picture on the right is blocked with the synthesized peptide.



Western blot analysis of lysates from LOVO cells, using PEVR2 Antibody. The lane on the right is blocked with the synthesized peptide.



Western blot analysis of the lysates from K562 cells using PEVR2 antibody.